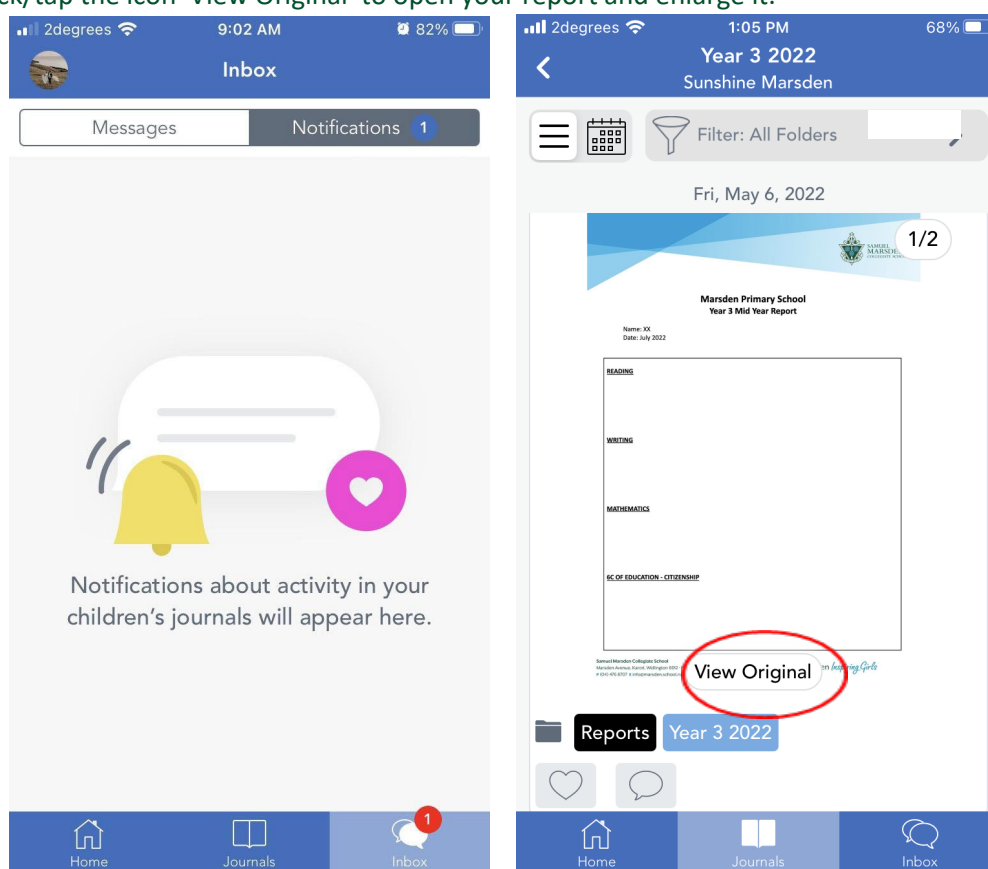


Accessing your daughter's Primary School report



1. When your daughter's Primary School report is released, you will receive a notification from Seesaw on your phone. This is the same as what happens when learning is posted on Seesaw. Please ensure your notifications are on.
2. When you open Seesaw, you will see a number '1' on the Inbox button at the bottom of your screen, and a '1' in Notifications at the top of your screen. The report is in a folder called 'Reports'.
3. Click/tap the icon 'View Original' to open your report and enlarge it.



4. You can access your report anytime by locating the 'Reports' folder on the Seesaw App:
 - i. Pull/swipe down on your Journal feed from the top, to reveal the 'filter menu'.
 - ii. Tap the 'Filter: All Folders' button to be taken to a list of folders.
 - iii. Select the 'Reports' folder to view your daughter's reports.

Your daughter's report will also be saved on the [MyMarsden Portal](#) (log in, go to 'Student Information', then 'Documents').

Please contact your daughter's teacher if you have any questions. If you have forgotten your login details for Seesaw or the MyMarsden Portal please email mymarsdenportal@marsden.school.nz