



Welcome to School 2018



SAMUEL
MARSDEN
COLLEGIATE SCHOOL



Dive in!

When the bright blue of the sea beckons you in on a hot summer's day, do you wade in on tip toe allowing the water to slowly creep up your body, or do you dive straight in? There's no right or wrong of course. Either way you eventually get wet and have great fun. Guess what I do?

Well, I used to be a wader, but these days I'm most definitely a diver.

The sudden shock of the cold can take your breath away – but the exhilaration of it! I love it. I don't want to waste a minute of being immersed in the salty cool goodness of the waves – the embrace of the big wide ocean.

As the school year gets underway it's finally time for me to dive into the adventure and privilege that is joining and leading the Marsden family. I'm so ready, even though I've thoroughly enjoyed the season of waiting at the edge with my toes in the seafoam. It's provided the lovely opportunity to meet some of you and relish the anticipation of all that's to come.

I'm effectively diving into a new country, a new school, a new position and a new challenge, which is actually pretty big. But I'm exhilarated by the prospect and promise of it

because we're in it together and aiming for the same worthy outcome: to be our very best as people preparing for lives of meaning, accomplishment and genuine happiness.

How do you feel about your own foray into the new school year? Maybe despite all you know to be true about the wonderful opportunities and support available at Marsden, you feel a little bit scared. That's ok. It's understandable. Sometimes the new and unknown can do that to you.

I want to encourage you, however, to muster all your courage and dive straight into the year with me. I can assure you that the benefits of a deep dive into the ocean of learning at Marsden with the support of your peers and our expert staff will be incredibly rewarding.

Narelle Umbers
Principal

Back to school

2018 Term Dates

Term 1

Wed 31 January – Fri 13 April
Tues 6 February (Waitangi day)
Easter Break:
Fri 30 March (Good Friday) –
Tues 3 April

Term 2

Mon 30 April – Fri 6 July
Mon 4 June (Queen's Birthday)
Tues 5 June (staff only day)

Term 3

Mon 30 July – Fri 28 September

Term 4

Tues 16 October – Thurs 6 Dec
Mon 15 October (staff only day)
Mon 22 Oct (Labour Day)

Absences

Please notify the School by 8.30am of your child's absence or lateness. Please email absences@marsden.school.nz or call (04) 476 8792 Ext 701. You can also communicate your child's absence via the School App. Messages may be left 24 hours a day. Parents are asked not to request leave or time out of school for students during the term unless absolutely necessary. If an absence is required the request should be made well in advance, in writing, to the Principal. Dental and medical appointments and driving lessons should be made outside of school hours.

Week 1 at Marsden

Preschool

Preschool begins at 8.15am on Wednesday 31 January 2018.

The Preschool is running a Parent and student BBQ on Friday 16 February at 3pm. We look forward to seeing you there!

Primary students, Years 1–6

Primary School students go to their classrooms at 8.45am on Wednesday 31 January 2018. Please go to the Primary School office if you are unsure of the location of your classroom.

Orientation "O" Week

Year 10 students

Year 10 students will be at the Hillary Outdoors Education Centre for the week from Sunday 28 January to Friday 2 February. Students are to meet at the School Vera Street entrance on Sunday 28 January at 12.15pm.

Year 7–9 and Year 11–13 students

All Year 7–9 and Year 11–13 students start school at 8.25am on Wednesday 31 January.

The timetable for Years 7–9 and Year 11–13 students during "O" week is as follows:

- Periods 1 and 2 will be spent with their form teacher or tutor
- Periods 3 and 4 will be academic lessons
- Periods 5 and 6 will be activities with buddies in House groups

Year 9 students will have leadership activities on Thursday (periods 5 and 6) and Friday (Periods 1 and 2).

Year 13 students

Year 13 students will be at Silverstream Retreat from Thursday lunchtime to Friday lunchtime.

International Students

Welcome back to all our International students who will be arriving to start a new school year with the Marsden family. A special welcome to new students who are joining us for the first time. Please note these important dates:

Saturday 3 February (for new International Students only)
Wellington Orientation Day

Wednesday 7 February, 6pm
International Students' BBQ

This is to welcome our international sisters and to allow all Homestay families to meet each other. The BBQ will be held in the Marsden House courtyard – this is for all our International Students and two guests from their host family. Please indicate your acceptance of this invitation, and any dietary requirements, by emailing sarah.harvey@marsden.school.nz by Thursday 1 February.

Saturday 17 February

WPEN Chinese New Year celebration Wellington waterfront – evening.

Wednesday 21 February

WPEN Orientation Programme for all International Students Periods 1–4 Auditorium and Room MH1.

If there are any other details you would like to discuss before coming to school please contact the school office on (04) 476 8707.

Staff

We are very proud of the wonderful team of teaching and support staff we have at Marsden!

Senior Management Team

Members of the Senior Management team are:

Narelle Umbers	Principal
Margaret Adeane	Academic Director
Anne Field	Director of Pastoral Care
Nev Gajadhar	Business Director
Celia McCarthy	Director of Marsden Primary
Anne Winnall	Director of Marsden Whitby

Deans

Wendy Carroll	Dean Years 7–10
Jane Hazelton	Associate Dean with responsibility for Year 8
Anita Stark	Associate Dean with responsibility for Year 10
Aylana Wright	Year 9 Leadership Programme

Year 7 and 9 parents please use Wendy Carroll as your contact.

Anne Field	Dean Years 11–13
Carolyn Towell	Associate Dean with responsibility for Year 11
Pam McConchie	Associate Dean with responsibility for Year 12

Year 13 parents please use Anne Field as your contact.

Sarah Harvey	Dean of International Students
--------------	--------------------------------

New Staff

We warmly welcome Narelle Umbers as our new Principal in January. Alison McManus will join her as EA to the Principal as Narelle settles in, and you will see a new face at reception in Term 1. Over the course of 2017 we have also welcomed the following staff: Sonia Stinson (Enrolment Registrar), Gretha Agate (Attendance Administrator), Caroline Morris (ICT Network Technician), Aylana Wright (English Teacher), Astrid Visser (Teacher of Art & Design), Kaz Bartsch has taken on the role of Teacher in Charge of Visual Art, Vijay Raj has moved to the Uniform Shop as Uniform Shop Manager, Jennifer Koorey and Pamela Hunt (Uniform Shop Assistants), Natalie Hillier (Teacher Aide), Maddy Hazelton (Teacher Aide) Rachel Gamble-Flint has taken on the role Director of Rowing/Head Rowing Coach and Teacher Aide.

Police vetting

The school endeavours to provide the safest possible environment for students. Staff are police checked and the school requires any adults with responsibility for, or contact with, students to agree to a police check or to sign a self-declaration form.

This includes parents who volunteer to coach or manage a sports team or cultural group, who accompany a school field trip, accompany camps etc. The staff member involved with the activity will provide the appropriate forms to volunteers or these can be obtained directly from Alison McManus alison.mcmanus@marsden.school.nz

The names of all adult volunteers will be made available to the parents of all students participating in any trip, excursion, sports, cultural activity or camp. This may be via a further letter or email to parents if a first letter is sent seeking volunteers. If a parent has concerns about the suitability of any volunteer (from a student safety perspective) they should first raise this with the staff member arranging the activity.



Your child's safety

Civil Defence and Emergency

In an emergency the school will look after all pupils until they can be collected. Please note that in a civil defence situation, only caregivers or those people you have specifically named as emergency contacts can collect your daughter or son from school. This applies to all students from Preschool to Year 13. It would be particularly helpful if one of your emergency contacts was someone who lived locally.

Each year you are asked to check your contact details and the emergency contacts you have provided. Please take the opportunity to update this information with the school so that it is accurate in case of a civil defence emergency.

Safety around cars

Please do not drive in the school grounds when delivering or collecting children. Pupils must be dropped outside the school grounds at all times, unless special arrangements have been made. As there have been a number of 'close calls' involving cars and students, the Vera Street entrance is closed from 3.00pm–4.00pm and the Donald Street entrance is closed from 8.00am–4.00pm for safety reasons.

Please respect our neighbours and avoid turning into their driveways whenever possible. Some of our neighbours have reported damage to their drive and surrounding grass edges. We also ask that drivers observe all yellow 'no stopping' lines.

Emergency Food Supplies

The school makes provision for emergency situations but relies on parental assistance for food supplies. Food is required to feed the entire school population for a minimum of three days.

We never know when an emergency might occur so we would appreciate all items be delivered to the school by **Wednesday 14 February 2018**. If food is not received by this date there will be a small charge to your account to

cover the purchase of such items by the school. The expiry date on the food should show a date later than December 2018. The exception to this expiry date is long life milk but please try for a distant expiry date there too.

Students are asked to take the food to their class teacher (Preschool and Primary) or Form/Tutor Teacher (Years 7–13). Each student should bring at least two items of food (but any extra supplies will be gratefully received). Students are also asked to bring one box of tissues please. These are used as multi-purpose hygiene products. Each year group is asked to bring something different to ensure there is variety of food available. Please bring the following:

Preschool	Ready-to-eat meal (does not require water)
Year 1	Ready-to-eat meal (does not require water)
Year 2	Canned spaghetti
Year 3	Unsweetened canned fruit
Year 4	Canned vegetables e.g. corn, beetroot, carrots
Year 5	Canned meat or fish
Year 6	Baked beans
Year 7	Breakfast cereal
Year 8	Canned vegetables e.g. corn, beetroot, carrots
Year 9	Canned bean or potato salad
Year 10	Canned meat or fish
Year 11	Long-life milk (not milk powder)
Year 12	Unsweetened canned fruit
Year 13	Muesli/snack bars, cracker packs e.g. Le Snaks.

The food will be given to the City Mission if unused in 2018.



PORTRAITS BY WOOLF

FAMILIES & PETS | INDIVIDUAL PORTFOLIOS | LIFESTYLE SHOTS

CAPTURE THE MOMENT
WITH WELLINGTON'S LEADING PHOTOGRAPHER
ON LOCATION/OUTDOORS

BOOK NOW WWW.WOOLF.CO.NZ/CONTACT OR (04) 917 6861



Technology

Staying up to date

MyMarsden

MyMarsden (also known as Ultranet) is where you can find all the day to day bits of information to help with life at Marsden e.g. newsletter notices, staff email addresses, school calendar, school news (school events and student achievements), exam information, career information, babysitter contact details, uniform shop hours, digital device, MPA and Old Girls information etc. MyMarsden has been specifically designed to provide information for parents, students, staff and Old Girls. Our website marsden.school.nz is aimed at people considering a Marsden education, but pages of interest may be the Scholarships, transport and news pages (also available on MyMarsden).

The Karori and Whitby campuses each have their own MyMarsden. You can access MyMarsden from the top right hand corner of our website marsden.school.nz (Students/Parents/Staff). The direct link to MyMarsden Karori is <http://marsden.ultranet.school.nz/Home/> Please feel free to scroll through the menu on the left hand side to familiarise yourself with the school information available there. The School Calendar is located at the bottom of this page. MyMarsden also has pages for our Alumni and the Marsden Parents' Association.

Marsden School App

Marsden School has a School App. This allows for efficient and timely communications of school information. It is compatible with Apple and Android devices. Please download it if you have not already done so. Downloading



instructions can be found on the MyMarsden, Marsden Newsletter, Attachments page (Term 1 2018)

<http://marsden.ultranet.school.nz/WebSpace/7270/>

With the start of a new year please remember to update your notification groups (your child will be in a different Year group now and may be doing different activities) – just go to the menu on your App, choose ‘Notice Subscriptions’ and touch the buttons to change.

Marsden Newsletter and notices

Marsden School will send out a weekly newsletter with a message from the Principal, administrative notices, school news, student achievements, a link to the School Calendar and MPA and community notices. The Marsden Newsletter is the best way to keep up to date with information and events at school, which apply to your child.

The Marsden Newsletter is sent via email and via the School App. There will be links from your email/App to the School Calendar and the relevant school notices pages. The school notices pages are located on MyMarsden Karori: Preschool/Primary, Years 7–10 and Years 11–13. You can check these at any time. Note: if you cannot open links from the school newsletter on your mobile device please check whether you have the latest operating system, or try opening in another browser e.g. Google Chrome.

CareMonkey

CareMonkey is a parent driven system to collect medical and emergency information, trip permission slips and forms for dissemination. The system provides parents with a secure way to share necessary medical information required by the school in the care of their child. If you are a new parent to Marsden you will receive an email from CareMonkey to register your details.

We ask everyone to update CareMonkey if any details change.

BYOD

The ‘bring your own device’ (BYOD) programme has been very successful and is now a compulsory requirement for Years 7–13 students. Learning is changing and students need to have access to their own device. All students are to bring their device to school for lessons. We recommend a laptop for Years 9–13, Years 7–8 can get by with a tablet. You can find more details about our strategy and recommendations for a device by accessing the MyMarsden, Marsden info-SITE, Digital Devices page <http://marsden.ultranet.school.nz/WebSpace/4749/>

Uniform

Now is the time to check that school uniforms are ready to go for the first day of school. Please ensure uniforms are clean and pressed.

Summer



Winter



Left to right: Years 7–11, Primary, Preschool, Years 12–13

Second-hand uniforms

Second hand clothing may be dropped off to the Uniform Shop between 10am and 12pm on Wednesday 24 January. You can also leave clothes at the Main Reception before this time. A uniform second hand sales form can be found on the school website <http://marsden.ultranet.school.nz/WebSpace/4741/> and this must be completed at the time of depositing clothing. Please note we cannot accept any clothing without a completed form. Blazers, skirts and pinafores must be dry-cleaned and in a fit condition to sell. All other clothing must be laundered and pressed.

Uniform shop hours for 2018 are:

Tues 23 January	9am–3pm
Wed 24 January	10am–5pm (second-hand clothing drop off 10am–12pm)
Mon 29 January	12pm–5pm
Tues 30 January	9am–2pm
Wed 31 January	11am–5pm
Thurs 1 February	9am–12pm

Normal hours resume the week beginning 5 February: Mondays 8am–9am and 12pm–5pm; Wednesdays 12pm–5pm. The Marsden Uniform Shop is located at 153 Karori Road in Marsden Village, with access from the car park in Marsden Village.

Sun Smart Policy and hats

Students are required to wear a school hat or cap when outside during Terms 1 and 4 between 11am–3.30pm. Hats/caps are available at the Uniform Shop and should be worn during lunch, sport, excursions and other outdoor activities.



School Stationery, Years 7–13

Years 7–13 Stationery lists for 2018 are available on the MyMarsden, infoSITE, stationery page: <http://marsden.ultranet.school.nz/WebSpace/4030/>

We also offer a simple online purchase option through the OfficeMax MySchool website. To use this service, go to the stationery list page (above) and click on OfficeMax MySchool icon. This takes you to the Marsden Karori page on their site. Please enter your daughter's name and details and select her subjects. Orders over \$46 (including GST) qualify for free delivery to your home or workplace. In Years 1–6 exercise books are provided by the school.

Cafeteria Services

Alliance catering (Spotless Services) will continue to operate our School Cafeteria. The Cafeteria will be open from 31 January and run from 8.00am– 1.30pm during the term. The Cafeteria provides a range of healthy and nutritious food and operates on a cash or EFTPOS system. Primary and Preschool families will be provided with a list of foods available.

Parent/teacher coffee evenings and BBQs

Parent/Teacher coffee evenings are an opportunity for you to meet Deans and Form Teachers and particularly to meet parents of other students in your child's class.

Preschool

The Preschool is running a Parent and student BBQ on **Friday 16 February at 3.00pm.**

Primary School

The Primary School Year 1–6 Parent coffee evening will be on **Tuesday 13 February at 7.00pm.** Please meet in the Primary School vestibule.

Years 7–13

The coffee evening for parents of Year 7–13 students will be held on **Monday 12 February at 7.00pm.** Please meet in the School Auditorium, followed by supper.

International Students

There will be a welcome BBQ for all new and current International students and their host families on **Wednesday 7 February at 6.00pm** in the Marsden School courtyard. Please RSVP with number of people attending to sarah.harvey@marsden.school.nz by Thursday 2 February 2017.

Picnic on the Lawn

Our whole school Picnic on the Lawn (Primary School playground lawn) will be on **Friday 9 February, 5.00pm–7.00pm.**

Sports

Sports Programme

At Marsden, we believe that sports teaches students about sportsmanship, teamwork, courage and healthy physical activity. We want Marsden girls to be gracious winners and good losers. We'd like all girls to take up a sport in 2018 and have fantastic programmes to develop their sports skills in a high performance environment. All sports' information, registrations and other details can be found on the Samuel Marsden Collegiate School Sports website marsdensport.school.nz

Students participate in activities which range from rowing, badminton and table tennis to our highly competitive hockey, netball, cricket and football. We have 70+ Marsden teams competing in over 25 different sports around the region, one of the highest participation rates in the country. Girls can also join the school gym – there's something for everyone.

We are lucky to have the energetic support of parents in all our sports. The Friends of Netball, Friends of Hockey, Friends of Rowing and Friends of Football are particularly strong social and fundraising groups within the school.

All information regarding codes, annual events and online registrations will be available from **Monday 1 January** (see details opposite). If you have any queries please contact the school on (04) 476 8707.

Years 7–13 Athletic Sports, Newtown Park, Thursday 22 February 2018 (Week 4)

Our first sports event of the year is Athletic Sports, which will be held at **Newtown Park on Thursday 22 February**. This is a fun day filled with lots of school spirit. It is a House competition that allows everyone to compete both on the track and in a range of field events. Students are to wear House t-shirts and PE shorts or track suits. Sports shoes are a must. Students make their own way to Newtown Park for an **8.25am roll call** and will be dismissed from the park at approximately 2.45pm. There is a bus available to take students back to Karori and regular school buses leave Marsden at 3.30pm. You will receive an e-mail to reserve a seat on the returning bus. The day's activities include the March Past, a sausage sizzle and the highlight is form class and House relays to complete the day. A programme will be included in the weekly Marsden Newsletter. Parents are encouraged to come along and support their daughters on this exciting and action packed day.



Sport Registrations 2017

Registrations for both Summer and Winter sports in 2018 will open on **Monday 1 January 2018**. They will close on **Wednesday 31 January**, so please ensure your daughter is registered for all of the sports she wishes to participate in by then.

Please register within the correct dates, as we have to get teams entered into competitions in the first week of school. To register, head to marsdensport.school.nz

You can read up on the sports we offer by clicking on 'Sports & Fees,' which is also where you will find out how much each sport costs, what day trainings and games are and competition dates. Please ensure your daughter is available on these days and times before registering. You are able to register by following the link on each individual sports page, or by clicking on 'Registrations' and then choosing the correct Year group.

If girls wish to participate in more than 2 sports per term this must be discussed with the Sports Office before registrations are made.

If you have any questions regarding Year 9–13 sports, please email Elliott Brookes on elliott.brookes@marsden.school.nz, and for any questions about any Year 1–8 sports please get in touch with Kathryn Petrie on kathrynn.petrie@marsden.school.nz

Note: Registrations for Individual Sports for the AIMS Games will remain open for an extra month.

Australia 2018 – Hockey

Planning is underway for our trip to Australia for our hockey players in July 2018. This is an opportunity that will be open to Year 9–13 players who are playing Hockey in 2018. We still have a couple of spots available, so if your daughter is interested please contact the sports office. All information is also on the sports website.

Marsden Sports website

The Marsden sports website is the best place to find all the information about Marsden sport. This site is dedicated to Marsden Sport draws, registration information and more. Please refer to it throughout the year: marsdensport.school.nz

Cultural Programme

Marsden offers a wide range of cultural activities and there are many opportunities for your daughter to get involved.



The 2017 musical Jesus Christ Superstar was a hit with the performers, crew and audience last year. We are looking forward to the Year 7–13 production of 'Alice' in 2018.

Playing and enjoying music at Marsden opens the door to a lifelong appreciation of the performing arts. We have choirs, orchestras, rock bands, flute ensembles and hand bell ringing, as well as the academic Music curriculum which includes our fun and innovative Year 7 Band programme. Specialist teachers are available during the school day for students to have private tuition in the instrument of their choice.

Our Composer-in-Residence programme gives music students the very real opportunity to experience a composer at work. During their residency, the composer takes

workshops with the girls and composes a unique piece of music for Marsden.

We encourage our girls to join in the School Production. Performing as a team in front of an audience builds confidence and great camaraderie. For those not seeking the limelight we offer technical workshops alongside the school production.

There are opportunities to perform in the Sheilah Winn Shakespeare Festival, to debate, dance or take Speech and Drama lessons from our specialist tutors.

Year 7–13 Production

Rehearsals for our production of 'Alice' will begin in Week 2 of Term 1. At the end of the summer holidays all cast members must check their emails for confirmed rehearsal times. Any Year 7–13 students starting at Marsden in Term 1 of 2018 who would like to be considered for the chorus should send their queries to sarah.wilson@marsden.school.nz

2018 Cultural Book

The 2018 Cultural Book contains information on the range of activities at Marsden and can be found on MyMarsden Karori at <http://marsden.ultranet.school.nz/WebSpace/4736/> from the end of January, along with the online registration form. If you have any questions, please email the Cultural Coordinator, Sarah Wilson on sarah.wilson@marsden.school.nz or call on (04) 476 8792 Ext.844.

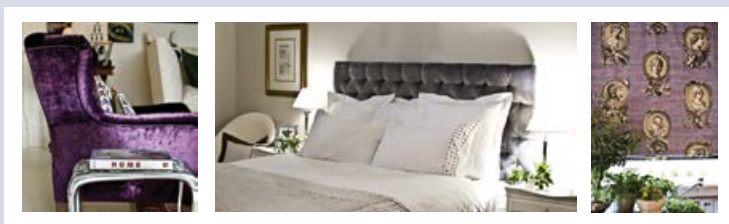
Recognising achievements

It is really important to us to recognise the success of our students in (school and external) cultural activities. Please email sarah.wilson@marsden.school.nz and inge.doig@marsden.school.nz if your daughter has achieved something throughout the year that should be celebrated.

Performance Diploma in Speech and Drama

Your daughter can leave school with a Performance Diploma in Speech and Drama! She can start her journey at Years 7, 8 or 9. Classes are available at lunchtime or after school. For further information contact Jan Avison on 021 446 600 or email janavison@gmail.com

BRIDGET FOLEY DESIGN



Tel: +64 4 476 3737 Mob: +64 29 977 0737 www.bridgetfoleydesign.com



Preschool and Primary School

We are all very much looking forward to having everyone back at school again and to meeting our new students and teachers! As usual, the school has been really busy as we prepare our programmes for the new term.



The first day of school is **Wednesday 31 January 2018**. The Preschool day runs from 8.15am until

3.30pm. The Primary School day for students from Years 1–6 begins at 8.45am and finishes at 3.15pm.

Parents of girls in Years 1–6: you will receive an email during the holidays letting you know who your daughter’s class teacher is for 2018, with an electronic copy of the 2018 Primary School handbook.

“The most special thing about my job is seeing happy girls every day who form supportive relationships and enjoy coming to school and learning.”

Celia McCarthy
Director of Marsden Primary

We love having visitors. The Preschool and Primary School run a number of (grand)parent/student events throughout the year, as well as Open Days, School in Action and Bring a Friend Days. Students also have many opportunities to perform throughout the year. Late last year our students shared their talents at the ‘Good Companions’ Christmas lunch; at the Homewood (British High Commissioner’s residence) Save the Children fundraiser; the Midland Park fundraiser for Wellington City Mission; and the Botanic Gardens children’s concert where we took part in a concert in the Soundshell.

The Preschool invites all Preschool parents to a BBQ to meet our new families on **Friday 16 February at 3.00pm**. A warm invitation is also extended to all Primary School (Year 1–6) parents to come along to our Primary School coffee evening on **Tuesday 13 February at 7.00pm**. This will begin in the Primary vestibule and parents will have the



“Each term Preschool children choose one or two topics and explore them through art, drama, construction and imaginative play. As teachers we are excited when we see the children enthused and engaged, creating, cooperating and inspiring each other.”

Anne Cave
Head of Preschool

opportunity to meet the specialist teachers and to hear about their daughter’s class programme. Tea and coffee will be provided after the class meetings. This event is always well attended and will finish before 8.30pm. We look forward to seeing you there!

Ad summa,

Celia McCarthy
Director of Marsden Primary



Community Welcome for Marsden Principal Narelle Umbers

You are invited to a community event to welcome our new Principal, Narelle Umbers, and to hear her vision for Marsden and education, followed by drinks and canapés.

Wednesday 21 February 2018
6.00pm–7.30pm
Foyer, Te Manawa o te Kura
Marsden School



Please RSVP to Alison McManus
alison.mcmanus@marsden.school.nz
04 476 8707 Ext.827 by Monday 12 February 2018



The Marsden Community is very much looking forward to welcoming Narelle Umbers as our Principal. The school will welcome Narelle at a special school assembly on 12 February and on 21 February parents and friends of the school will have the opportunity to welcome Narelle and hear her speak of her vision for Marsden, please see your invitation above.

Marsden Parents' Association Annual General Meeting

All parents are cordially invited to attend the AGM of the Marsden Parents' Association on **Thursday 22 February 2018 at 7pm in the iCentre, Marsden School, Karori.**

The first meeting of the year will follow the AGM. For more information on the MPA please email us at MarsdenParents@gmail.com or visit <http://marsden.ultranet.school.nz/WebSpace/4582/>

Membership of the MPA is a marvellous way to connect to Marsden, to meet new friends and to support your children. We look forward to seeing you on the 22nd.

MPA meetings 2018

All meetings are held on a Thursday in the iCentre at Marsden, starting at 7pm. All parents are most welcome. The 2018 meeting dates are: AGM 22 February 7pm and further meetings on 22 March, 10 May, 21 June, 9 August, 13 September, 25 October and 22 November.

Friends of Football Annual General Meeting

The second Annual General Meeting of Marsden's Friends of Football will be held on Tuesday 20 February at 6.30pm in the Whina Cooper Room in the iCentre at Marsden School, Karori. We are looking forward to another great turnout. Please come along and play your part in the smooth and effective running of our Club. If you cannot make it, then apologies can be sent to friendsoffootballmarsden@gmail.com Check us out on Facebook facebook.com/MarsdenFOF/

Parent events

At Marsden, we have a lovely tradition of holding events for our parents and caregivers. These include Father/Daughter breakfasts for Years 7–13, and for the Primary School; Year Group Mothers' Drinks at Year levels 7, 9, 11 and 13; and Mother/Daughter dinners at Year levels 8, 10 and 12. These events are wonderful opportunities to meet other parents and friends of your daughter. Please

check the school calendar for dates; parents will be emailed invitations two weeks prior to each event. Any queries please contact Martine Foster on (04) 476 8792 Ext.876 or email martine.foster@marsden.school.nz

Marsden is 140 years young in 2018!

We are planning a number of events to mark our proud history of providing an Anglican education that stands on the pillars of Excellence, Resilience, Creativity and Giving. Ad Summa 'Aim for the Highest' is our motto and we believe the ultimate goal of education is to lay the foundation for lives of meaning, accomplishment and genuine happiness.

From our Chaplain



Kia ora whānau,

As Samuel Marsden Collegiate School is an Anglican girls' school, you may be interested in what the Anglican Church's core values are.

The Anglican Church is a global community, found in most places on earth. Globally we have identified five "marks of mission" which are:

- To proclaim the good news of the Kingdom of God
- To teach, baptize and nurture new believers
- To respond to human need by loving service
- To transform unjust structures of society
- To safeguard creation and sustain and renew the life of the earth.

In 2017 the Wellington Diocese continued to focus on advocating for families living in poverty, encouraging our parishes to actively reduce our transport emissions so that we can play our part in addressing climate change, and helped the Red Cross settle 220 refugees in the Wellington region.

In following the five marks of mission at Marsden, we continue to teach, baptize and nurture our students. We serve in many ways such as our service trips to Fiji and Samoa, assisting at City Mission functions, the soup kitchen and singing at retirement villages. In June the Marsden community collected all the goods necessary to help settle one refugee family of 6, for the August refugee intake. Also in 2017 year groups throughout the school were involved in projects which involved investigating, planning and activating some sort of service – petitions to government to ban plastic bags, a stationary drive for a preschool in a low income area, tree planting, rubbish clean up in a local walking track and providing dinner at Ronald McDonald House are just some examples.

Welcome to Marsden School. A school which takes its Anglican Character seriously, and which works to live out the Five Marks of Mission in all we do.

Arohanui,

Sarah King
Chaplain



Cici Davie, Isabella O'Meeghan, Imogen Skelton and Maggie Dai (Lauren Benseman absent), presented a petition to Government to impose a 10% levy on all plastic bags sold through supermarkets.

Transport

Getting to Marsden is easy. Students of all ages travel from all parts of the Greater Wellington region to attend Marsden Karori.

Bus Service

Marsden and Metlink run bus services from the Wellington suburbs to Marsden and return. The buses arrive and depart from the Vera Street entrance. Younger children can be buddied with an older student travelling on the same bus. Please speak to your child's teacher to arrange this.

There is a duty teacher who monitors the children as they leave Marsden at the end of the day. The buses depart at 3:40pm.

Bus# To Marsden from

673	Churton Park, Broadmeadows & Ngaio https://www.metlink.org.nz/timetables/school/673
674 *	Khandallah, Ngaio & Wilton https://www.metlink.org.nz/timetables/school/674
678	Moa Point & Seatoun https://www.metlink.org.nz/timetables/school/678
677 *	Island Bay, Kingston & Kelburn https://www.metlink.org.nz/timetables/school/677
670	Kilbirnie, Roseneath & Wilton https://www.metlink.org.nz/timetables/school/670

Bus# From Marsden to

671 *	Wellington Station https://www.metlink.org.nz/timetables/school/671
672 *	Wilton, Wadestown & Courtenay Place https://www.metlink.org.nz/timetables/school/672
675	Ngaio, Broadmeadows & Churton Park https://www.metlink.org.nz/timetables/school/675
665 *	Oriental Bay, Kilbirnie, Miramar, Seatoun & Moa Point https://www.metlink.org.nz/timetables/school/665
677 *	Island Bay, Kingston & Kelburn https://www.metlink.org.nz/timetables/school/677

* Marsden only buses

Shuttle Service

We also operate school shuttle services from Eastbourne and Seatoun. The Eastbourne route varies according to students' needs and runs along The Esplanade to Petone then up to Karori. It is scheduled to arrive at school by 8.15am. If you are interested in this option please contact our parent in charge of this service, Cath Nind on 021 471 078 or email cath.nind@xtra.co.nz

We operate the Marsden School Van in Seatoun and Miramar and the route for this door to door service varies according to students' needs. It is scheduled to arrive at school by 8.15am. Please contact Jo Sherlock if you would like more information about this option. Jo can be contacted on 476 8792 Ext.832 or email jo.sherlock@marsden.school.nz



Snapper Cards

A Snapper card is great for students travelling on public transport.

Snapper Green

Primary students can get a **green Snapper** card from Snapper providers, which has a travel discount applied entitling them to child fare discounts on public transport.

Snapper enabled Student ID

All Year 7–13 students are issued with a **Snapper enabled Student ID** card when they start at Marsden. There is a cost of \$20 for the card which is updated every two years. Lost cards can be replaced for \$20. If your daughter loses her ID card or is experiencing problems with her card please contact the school office on 476 8707. **Please register your Snapper online snapper.co.nz** by creating a Snapper account so you can view your transaction summary and type of concession. The card can be topped up at dairies and other Snapper providers.

Note: Users must remember to tag on entering the bus AND tag off when leaving the bus to avoid penalty charges.

For further information visit snapper.co.nz

See you back at school!

Samuel Marsden Collegiate School
Marsden Avenue, Karori, Wellington
Private Bag 17000
Karori, Wellington 6147
(04) 476 8707
marsden.school.nz

Marsden, *lifelong.*